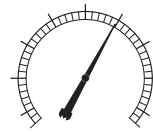


Experience the Difference



MARSH
INSTRUMENTS

Digital Pressure Gauge

Product Features

- Sensors sourced from US and Europe
- Low power consumption design
- Accuracy classes 1.0%, 0.5%, 0.4%, 0.2%, 0.1%, 0.05% available
- Add-on functions for data logging, switch functions, and electrical output
- Medium is anything compatible with 316LSS, including water, air, H₂ gas, etc.

Specifications

Sizes:	2.5" (65 mm), 3" (80 mm), 4" (105 mm)
Case and Connection:	304SS
Accuracy:	±0.05%FS, ±0.1%FS, ±0.2%FS, ±0.4%FS, ±1.0%FS
Ranges:	Vacuum to 23,000 psi
Operating Temperature:	-50° F to 160° F
Weather Protection:	IP 65 with rubber cover
Units:	PSI, Bar, kPa, Kg/cm ² , MPa, mBar, InH ₂ O, cmH ₂ O, mmHg, Torr, Pa
Long-term Stability:	±0.2% FS/Year
Pressure Connection:	Lower Mount or Back Mount ¼" NPT, G1/4, M20 or per customer request
Power Supply:	STD: AA Batteries(4"), AAA batteries(2.5", 3") ⁽¹⁾ For functional add ons: AAA batteries, USB, 24VDC, 110VAC, 380VAC
Sampling Frequency:	3 Hz, 5 Hz, Adjustable Option Available
Overload Capacity:	≤1,450 psi 200%; >1,450 150%
Electric Protection:	Reverse voltage protection, anti-electron magnetic interference, surge protection, electronic protection
Display Types/Sizes:	4 digit LCD (1.08"x2.05"), 5 digit LCD (2.55"x1.69"), Multi-Display with 3 LED readouts

(1) Batteries not included

Functional Add-on Options

- Contact switches with alarm: SPDT, DPST, DPDT
- Wireless Communication: LORA, GPRS
- Electrical Output: 4-20mA, 0-5 VDC, RS485
- Data Logging

Options

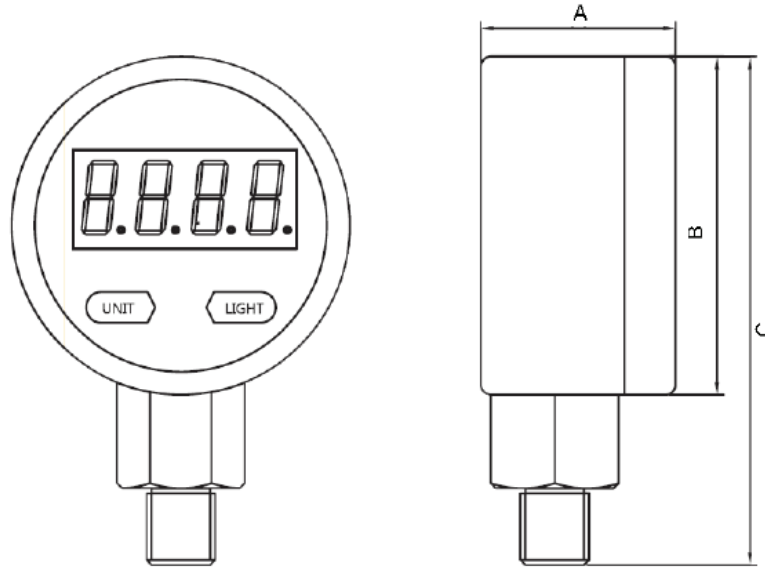
- Special connections
- Special ranges
- Custom logo/dial plate color
- Rubber Cover
- NIST Traceable certificate



Experience the Difference

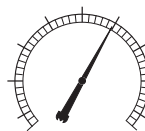


Dimensions



Dial	Unit	A	B	C
2.5"	In.	1.50"	2.56"	3.90"
	mm.	38	65	99
3"	In.	1.81"	3.15"	4.72"
	mm.	46	80	120
4"	In.	1.77"	4.13"	5.18"
	mm.	45	105	140

*Not all configurations are possible talk to your local distributor



Part Number

Example:

M-DPG	1	-	30	4	E	-	0	0	6
-------	---	---	----	---	---	---	---	---	---

Model

Digital Gauge	M-DPG
High Precision Digital Gauge	M-HPDPG

Mounting

Lower	1
Back mount front flange(*)	4

Size

2.5"	25
3"	30
4"	40

Process Connection (for pressures >10,000psi, M20 connection is used)

1/4" NPT	4
----------	---

Pressure Range

See Table for Range Code

Code	Range	Code	Range	Code	Range	Code	Range
A	30/0 inHg	CH	30/0/300 inHg-psi	H	0/300 psi	P	0/3000 psi
CB	30/0/15 inHg-psi	B	0/15 psi	I	0/400 psi	R	0/5000 psi
CC	30/0/30 inHg-psi	C	0/30 psi	K	0/600 psi	S	0/6000 psi
CD	30/0/60 inHg-psi	D	0/60 psi	L	0/800 psi	U	0/10K psi
CE	30/0/100 inHg-psi	E	0/100 psi	M	0/1000 psi	V	0/15K psi
CF	30/0/150 inHg-psi	F	0/160 psi	N	0/1500 psi	W	0/20K psi
CG	30/0/200 inHg-psi	G	0/200 psi	O	0/2000 psi		

Options (insert "-00" before Option codes) *Note: numbering past the pressure range is not mandatory

0

Scale (all digital gauges have multiple ranges)

0

Options (add all that are needed)

Data Logger	2
With contacts (Switch)	3
Rubber Cover	6
Oxygen Cleaned	9
Absolute Pressure	M
With output	R
Hard Wired (no batteries)	V

*Only on switch model

Note: All configurations not possible, consult your local distributor for confirmation