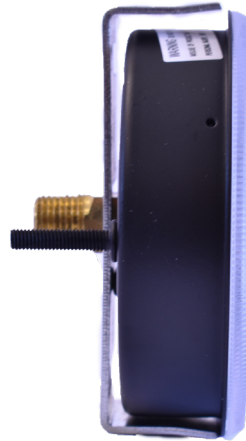
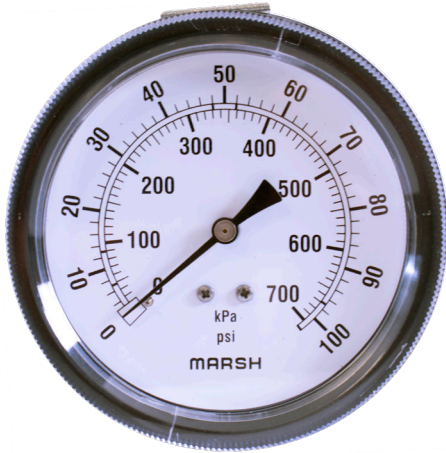


# J Series

Steel Case / Brass Internals / U Clamp Panel Mount



General Service Gauges



## Product Specifications

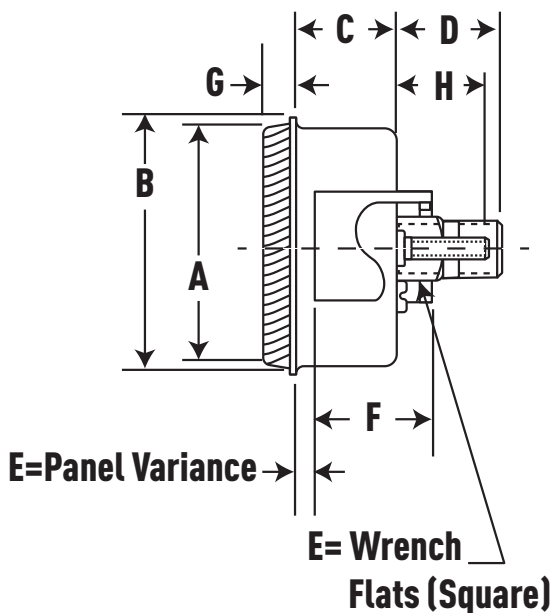
<b>Design</b>	Meets/Exceeds ASME B40.100
<b>Accuracy</b>	±3/2/3% (ASME Grade B)
<b>Dial Size(s)</b>	1 1/2", 2", 2.5", 3.5" Diameter
<b>Case</b>	Steel, Black Painted
<b>Bezel</b>	Steel, Black Painted, Fixed
<b>Tube &amp; Socket</b>	Copper Alloy
<b>Movement</b>	Brass
<b>Connection</b>	1/8 & 1/4 NPT - U-Clamp Panel Mount (Front Flange Optional)
<b>Pressure Ranges</b>	15 to 5,000 psi
<b>Standard Scale</b>	Dual Scale psi and kPa
<b>Dial Color</b>	Black Markings on White
<b>Pointer</b>	Aluminum, Black Painted
<b>Window</b>	Twist-On Acrylic
<b>Standard Case Fill</b>	Dry, Non-Fillable
<b>Ambient Temperature</b>	-40° to 160°F
<b>Vent Plug</b>	N/A
<b>Weight</b>	
1	0.2 lb.
2"	0.3 lb.
2 1/2"	0.4 lb.
3 1/2"	0.5 lb.
4 1/2"	0.75 lb.

The General Service Steel Case Gauge from Marsh Instruments is a family of cost-effective, general purpose instruments designed for reliable pressure measurements. Suitable for use with water, oil, air, gas or other noncorrosive media from vacuum/compound through 5,000 psi.

### Features:

- Superb quality, economical price
- Pressure ranges to 5,000 psi

### Product Dimensions



Dial Size	Product Numbers	A	B	C	D	E	F	G	H	I
1.5	J05XX	1.60	1.75	0.71	0.72	7/16	0.06-0.37	0.81	0.19	0.63
2	J24XX	2.06	2.25	0.94	0.88	7/16	0-0.43	1.22	0.20	0.92
	J26XX	2.06	2.25	0.94	0.88	7/16	0-0.43	1.22	0.20	0.92
2.5	J60XX	2.58	2.81	0.94	0.88	7/16	0-0.43	1.22	0.20	0.92
	J62XX	2.58	2.81	0.94	0.88	7/16	0-0.43	1.22	0.20	0.92
3.5	J88XX	3.65	3.98	0.91	0.87	7/16	0-0.49	1.10	0.24	0.92

Interested in ordering? Ordering information available at [MarshGauges.com](http://MarshGauges.com)