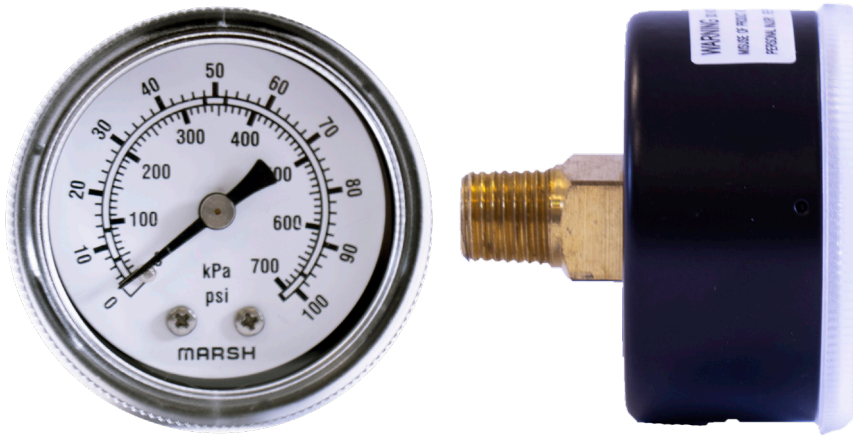


J Series

Steel Case / Brass Internals / Center Back Mount



General Service Gauges

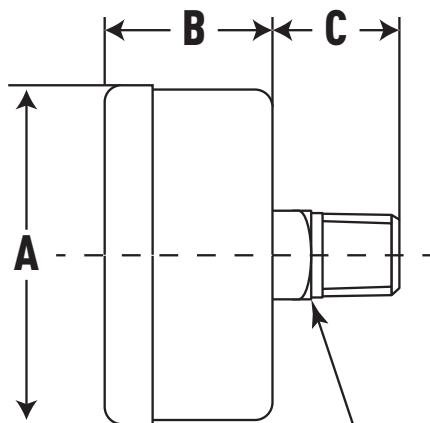


The General Service Steel Case Gauge from Marsh Instruments is a family of cost-effective, general purpose instruments designed for reliable pressure measurements. Suitable for use with water, oil, air, gas or other noncorrosive media from vacuum/compound through 5,000 psi.

Features:

- Superb quality, economical price
- Pressure ranges to 5,000 psi

Product Dimensions



**D = Wrench
Flats (Square)**

Product Specifications

Design	Meets/Exceeds ASME B40.100
Accuracy	±3/2/3% (ASME Grade B)
Dial Size(s)	1 1/2", 2", 2 1/2", 3 1/2" Diameter
Case	Steel, Black Painted
Bezel	Twist Lock Lens
Tube & Socket	Copper Alloy
Movement	Brass
Connection	1/8 & 1/4 NPT - Center Back Mount
Pressure Ranges	VAC/Compound to 5,000 psi
Standard Scale	Dual Scale psi and kPa
Dial Color	Black Markings on White
Pointer	Aluminum, Black Painted
Window	1.5"-3.5" Twist-On Acrylic 4.5" Flat Plastic
Standard Case Fill	Dry, Non-Fillable
Ambient Temperature	-40° to 160°F
Vent Plug	N/A
Weight	1 0.2 lb. 2" 0.3 lb. 2 1/2" 0.4 lb. 3 1/2" 0.5 lb. 4 1/2" 0.75 lb.

Dial Size	Product Numbers	A	B	C	D
1.5	J06XX	1.67	0.90	0.72	7/16
2	J18XX	2.20	1.22	0.82	9/16
	J20XX	2.20	1.22	0.82	9/16
2.5	J50XX	2.73	1.23	0.82	9/16
	J54XX	2.73	1.23	0.82	9/16
3.5	J86XX	3.71	1.15	.80	9/16

Interested in ordering? Ordering information available at MarshGauges.com