

# GG Series

Steel Case / Brass Internals / Center Back Mount



General Service Gauges



## Product Specifications

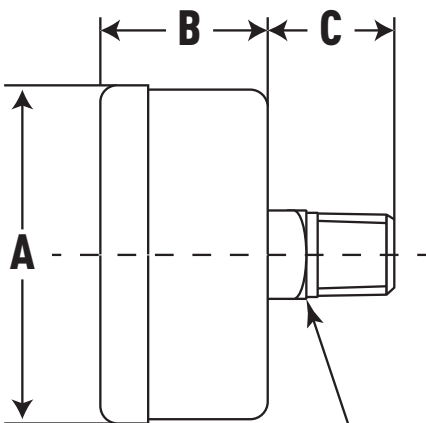
<b>Design</b>	Meets/Exceeds ASME B40.100
<b>Accuracy</b>	±3/2/3% (ASME Grade B)
<b>Dial Size(s)</b>	1 1/2", 2", 2 1/2", 3 1/2" Diameter
<b>Case</b>	Steel, Black Painted
<b>Bezel</b>	Steel, Black Painted, Fixed
<b>Tube &amp; Socket</b>	Copper Alloy
<b>Movement</b>	Brass
<b>Connection</b>	1/8 & 1/4 NPT - Center Back Mount
<b>Pressure Ranges</b>	VAC/Compound to 5,000 psi
<b>Standard Scale</b>	Dual Scale psi and kPa
<b>Dial Color</b>	Black Markings on White
<b>Pointer</b>	Aluminum, Black Painted
<b>Window</b>	Flat Plastic (Glass Optional)
<b>Standard Case Fill</b>	Dry, Non-Fillable
<b>Ambient Temperature</b>	-40° to 160°F
<b>Vent Plug</b>	N/A
<b>Weight</b>	
1"	0.2 lb.
2"	0.3 lb.
2 1/2"	0.4 lb.
3 1/2"	0.5 lb.
4 1/2"	0.75 lb.

The General Service Steel Case Gauge from Marsh Instruments is a family of cost-effective, general purpose instruments designed for reliable pressure measurements. Suitable for use with water, oil, air, gas or other noncorrosive media from vacuum/compound through 5,000 psi.

### Features:

- Superb quality, economical price
- Pressure ranges to 5,000 psi

### Product Dimensions



**D = Wrench  
Flats (Square)**

Dial Size	Product Numbers	A	B	C	D
1.5	GG15XXXXC8	1.57	0.92	1.61	0.433
2	GG20XXXXC8	2.047	1.122	0.64	0.534
	GG20XXXXC4	2.047	1.022	0.74	0.534
2.5	GG25XXXXC8	2.496	1.134	0.66	0.543
	GG25XXXXC4	2.496	1.122	0.771	0.543
3.5	GG35XXXXC4	3.488	1.22	0.86	0.543