

140FL Series

Full Size Diaphragm Seals



Product Specifications

Upper Housing Material

Carbon Steel
316 Stainless Steel

Lower Housing Material

Carbon Steel
316 Stainless Steel
Hastelloy C
Others Optional

Diaphragm Material

316 Stainless Steel
Hastelloy C
Tantalum
Others Optional

Instrument Connection

1/4" NPT, 1/2" NPT

Process Connection

Flanged, 1/2" through 3", 150# through 600#

Flush Connection

Flush Ring Optional

Pressure Rating

Vacuum - 2,500 psi (According to Flange Size)

Bolts and Nuts

Steel
Stainless Steel

System Fill

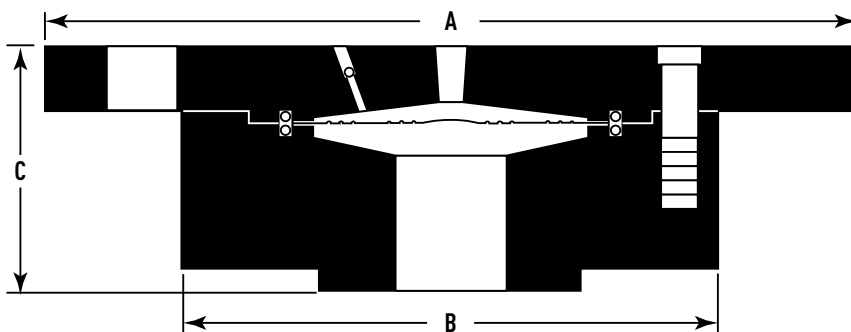
Glycerine
Silicone
Syltherm
Others Optional

Options

Custom Connection Sizes
Custom Materials

The Model 140FL Welded Diaphragm Seal is a welded diaphragm-to-upper design allowing the upper housing to be removed with the instrument in place without losing fill. Available in threaded connections for pressures from vacuum to 2,500 psi. Fill/bleed port screw in the upper is standard and a flush ring option is available.

Product Dimensions



Drawings for 1/2", 3/4", and 1" sizes can be found on MarshGauges.com

Process Connection		A	B	C
1 1/2"	150#	5"	5"	1.135"
2"		6"	4"	1.375"
3"		7.5"	5"	1.685"
4"		9"	6 3/16"	1.685"
1 1/2"	300#	6 1/8"	3 1/2"	1.500"
2"		6 1/2"	4"	1.575"
3"		8 1/4"	5"	1.960"
4"		10"	6 3/16"	1.960"
2"	600#	6 1/2"	4"	1.685"
3"		8 1/4"	5"	1.750"