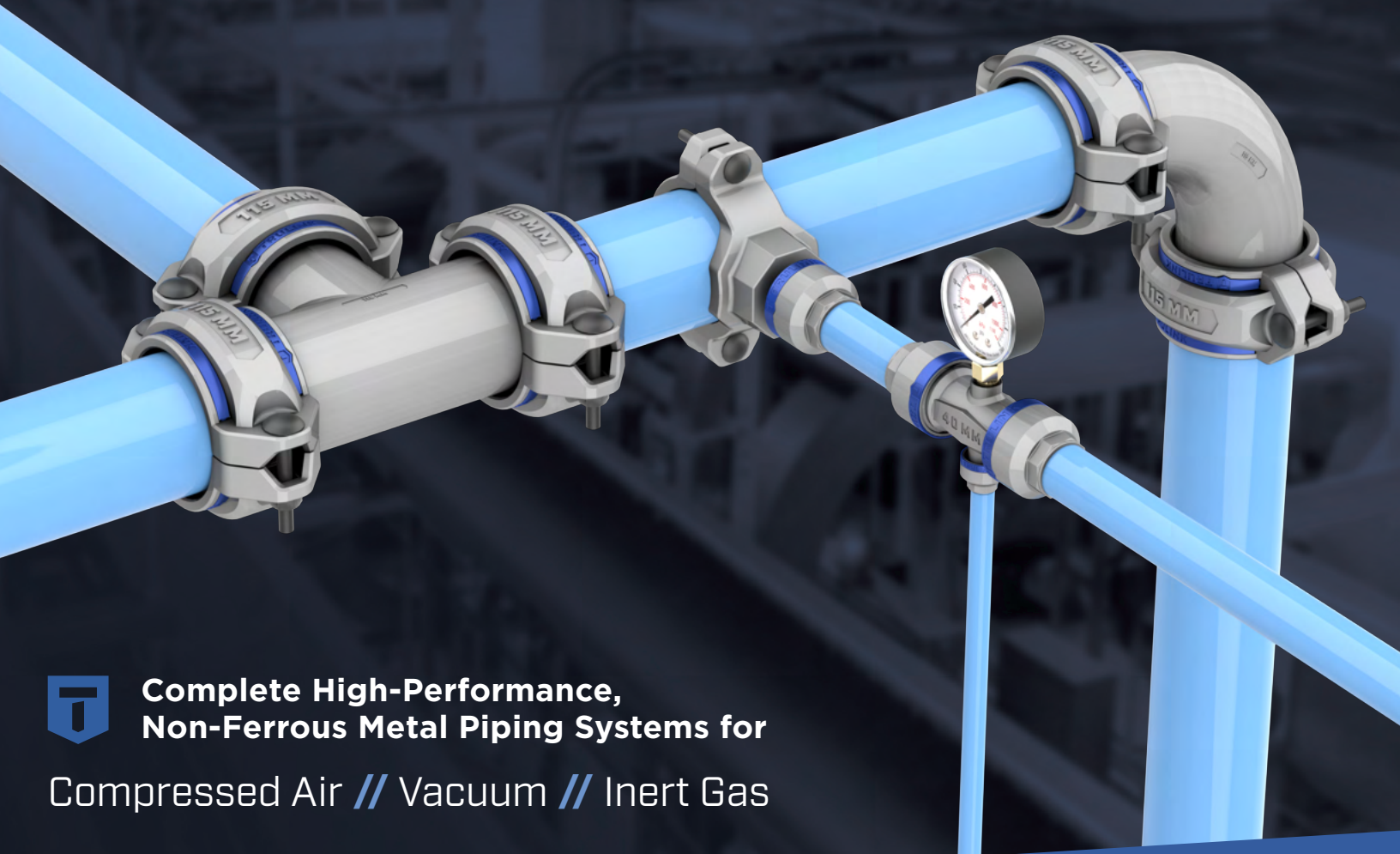




TRULINK™

DESIGNED, ENGINEERED, & MANUFACTURED BY **AST**

LEAK-FREE ALUMINUM PIPING & QUICK-CONNECT FITTINGS **ENGINEERED FOR LIFE**



**Complete High-Performance,
Non-Ferrous Metal Piping Systems for**

Compressed Air // Vacuum // Inert Gas

AST

**APPLIED SYSTEM
TECHNOLOGIES™**

INTRODUCING TRULINK™



Applied System Technologies has taken the best and made it better - introducing **TruLink**, the next generation in aluminum piping systems. Completely designed, engineered, and manufactured by AST, TruLink combines the proven reliability, safety, and installation ease of the past with cutting edge material, engineering, and manufacturing technology.

Boasting a 300 PSI, 300°F across the board rating, meeting FDA food grade regulations, and with AST's lifetime warranty covering all piping and fittings - TruLink is unrivaled. With our USA production facilities feeding our expansive distribution warehouses, you can be sure TruLink will be available when you need it.

- **LEAK FREE GUARANTEE @ 300 PSI, 300°F**
- **FOOD GRADE COMPLIANT**
- **EASIEST INSTALLATION / MODIFICATION PROCESS**
- **LIFETIME WARRANTY ON ALL PIPING AND FITTINGS**
- **UNMATCHED COMMITMENT TO SAFETY**
- **99% OF ORDERS SHIPPED THE NEXT DAY**

AN INNOVATIVE COMBINATION OF DESIGN AND FUNCTION

Industrial quality, all marine-grade aluminum fittings combined with a unique gripping technology is just part of the secret behind TruLink's patented design and industry-leading durability. In fact, TruLink fittings feature a double o-ring design made of high-grade nitrile for an additional layer of protection.

TruLink utilizes **ONLY TWO VARIATIONS** of coupling technology - push-to-connect and clamp-to-connect fittings. Both are preferred by many mechanical firms today for their ease of use and ability to form a dependably tight seal.

PUSH-TO-CONNECT

20mm-63mm

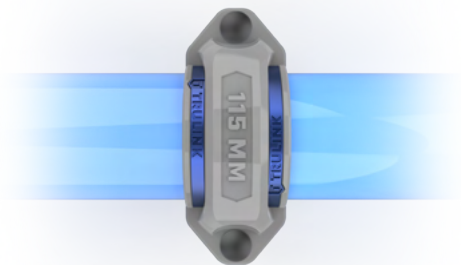
$\frac{3}{4}$ " - $2\frac{1}{2}$ "



CLAMP-TO-CONNECT

73mm-273mm

$2\frac{1}{2}$ " - 10"



In addition to Piping Systems, TruLink offers a variety of items to further enhance your Compressed Air System performance including:

- **SYSTEM FLOW CONTROLLERS**
- **WATER REMOVERS**
- **HOSE REELS**
- **QUICK CONNECT FITTINGS**
- **DRAIN VALVES**
- **OSHA COMPLIANT LOCKABLE AND EXHAUSTING VALVES**
- **CONDENSATE, OIL/WATER SEPARATION SYSTEMS**

SCAN HERE TO SEE ALL TRULINK PRODUCTS



ADVANCED TECHNOLOGY

Our multi-patented design revolutionizes compressed air piping systems with tighter tolerances, stronger seals, and deeper levels of engagement making TruLink the best product on the market.



More Reliable

Than traditional compressed air pipe and fittings



Lightest and Strongest Product on the Market

1/10th the weight of steel, structurally as strong as carbon steel



Costs Less

Over the life of your equipment



Zero Maintenance

Stop wasting time and money on identifying and repairing leaks



No Leaks

Corrosion-resistant pipe and fittings designed to eliminate pressure drop and increase energy efficiency savings



Go Green

Made of 100% recyclable materials



TRULINK PIPING SYSTEMS ARE ENGINEERED AND DESIGNED FOR THE DISTRIBUTION OF:



Compressed Air
Vacuum
Inert Gases



Mineral Oil
Glycol

THE TRULINK SYSTEM IS COMPATIBLE WITH:



Mineral Oil
Glycol
Compressed Air Condensate
Food Grade Environments

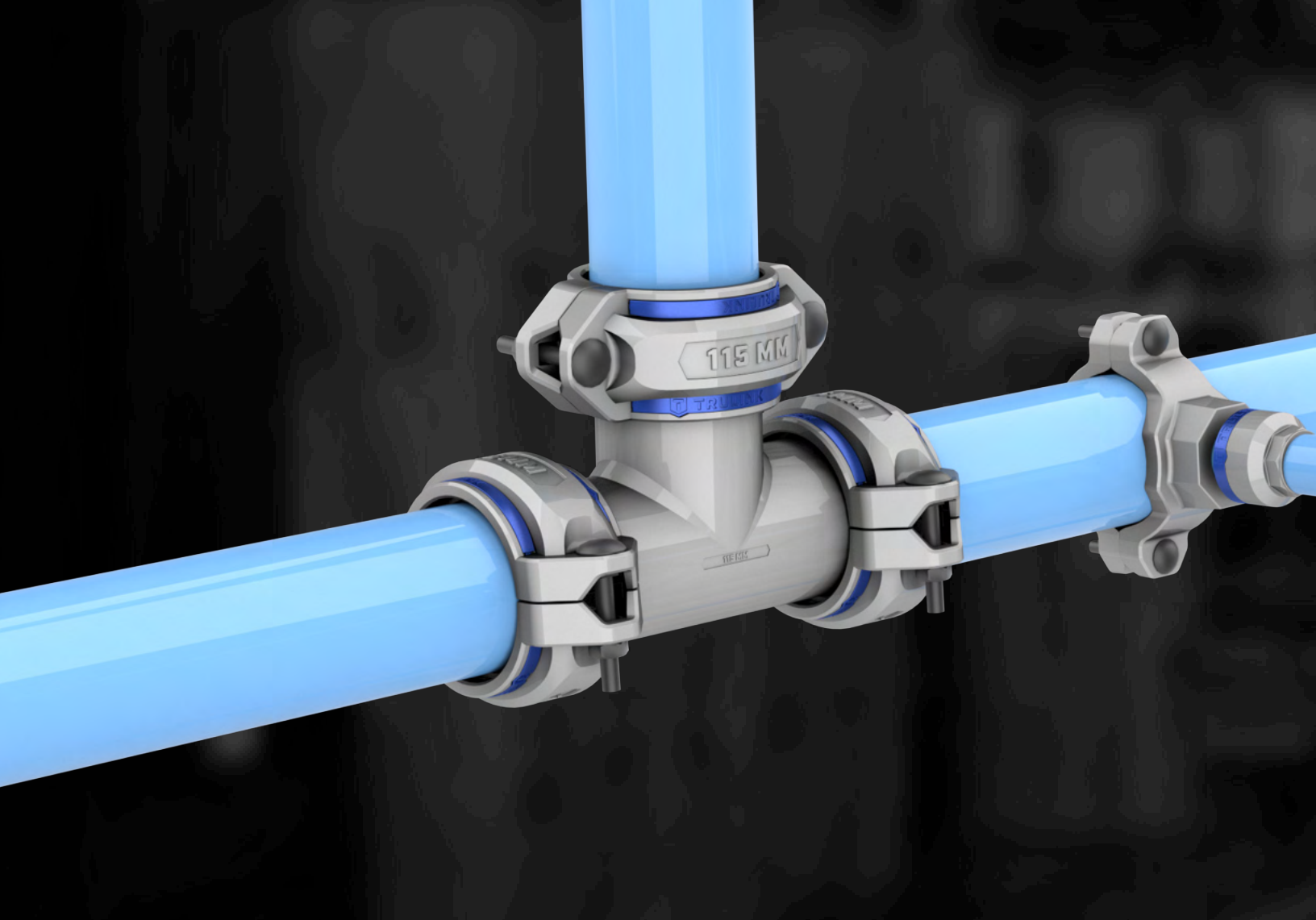


Thermal Variations Between
-4°F(-20°C) to 300°F (149°C)
Pressure Up to 21 bar (300 psi)
UV Radiation (Direct sunlight
exposure)

STANDARDS & APPROVALS:

- RoHS
- ASTM B221
- ASTM B308, B308M
- ASTM B429, B429M
- ASTM B241, B241M
- CRN
- ASME B31.1, B31.3
- ISO 8573
- Food Grade Compliant





SHIPPING

**Same Day Shipping on
99% of Orders**

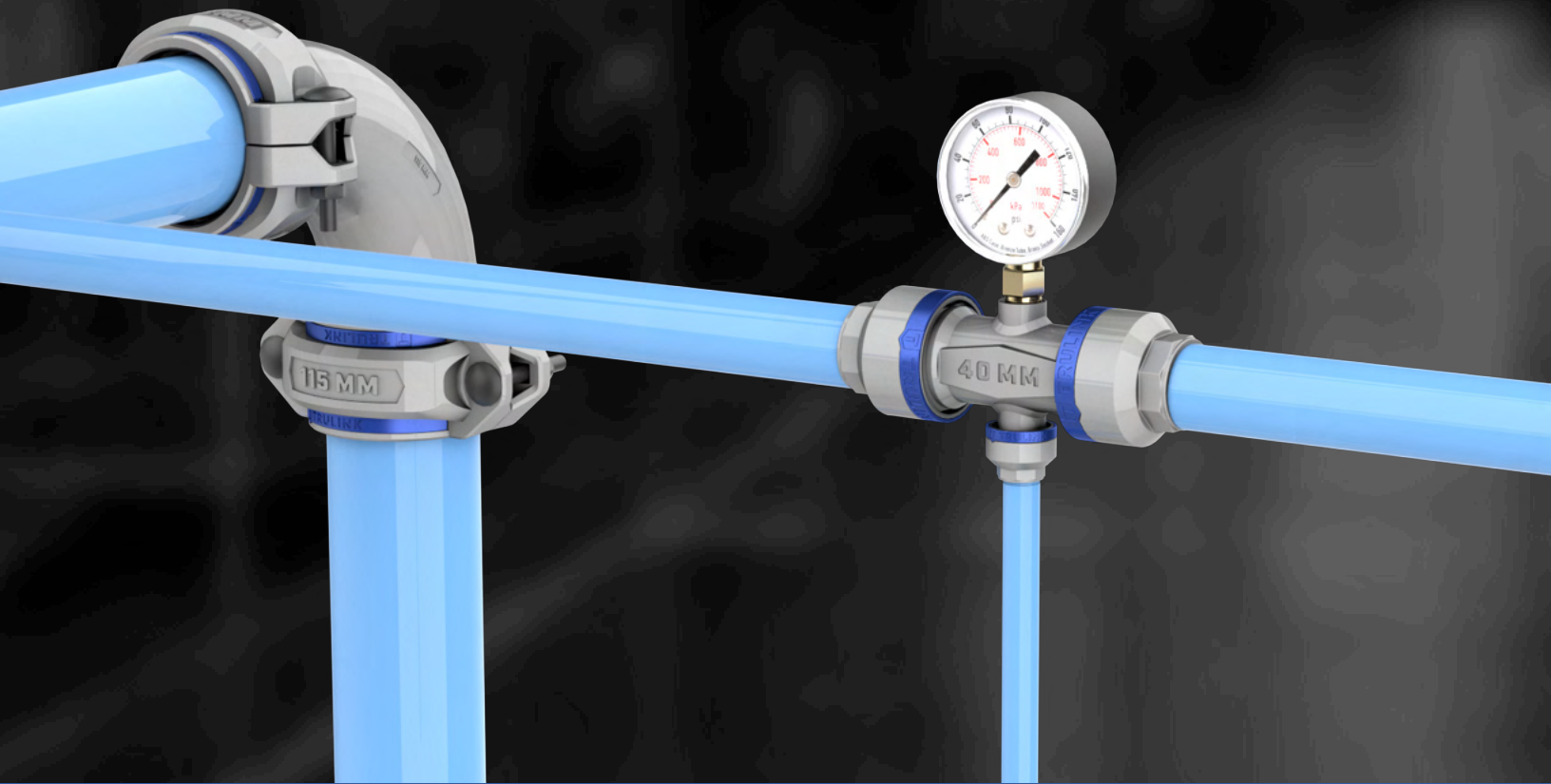
We have an extensive product inventory with warehouses strategically located across the U.S. We can respond to virtually any size order fast with same day shipping available on 99% of orders.



INSTALLATION

**Easiest Installation and
Modification**

TruLink makes installation of compressed air piping systems simple and low-cost. There is no welding, threading or gluing required. Our systems can easily be installed or modified by one person.



SAFETY

Unwavering Commitment to Safety

Safety is our top priority, this can be seen through our innovative technology and streamlined installation process.

TruLink is designed and tested for durability, strength, and quality to ensure a safe, high performing system.



WARRANTY

Lifetime Warranty Covering all TruLink Products

AST is proud to offer a Lifetime Warranty for all TruLink pipes and fittings. We are 100% committed to supplying the finest products available to our customers and will support them through the lifetime of the system.

DID YOU KNOW?

Compressed air leaks are one of the greatest sources of energy loss, accounting for up to

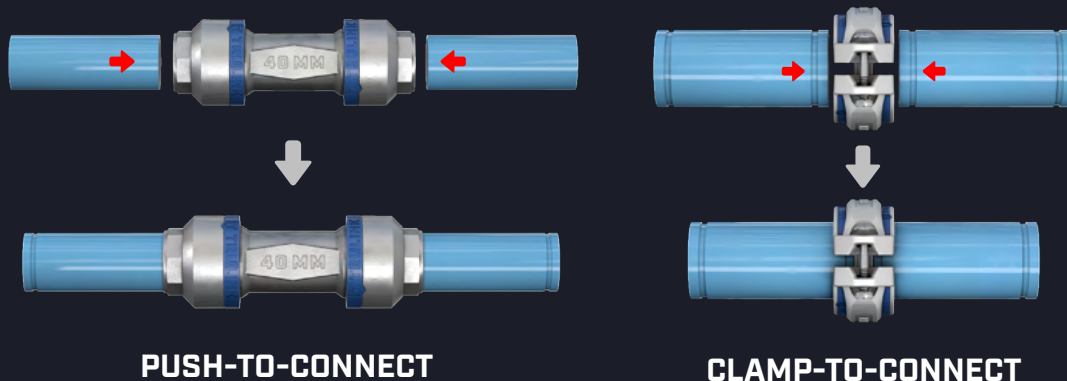
\$3.2 BILLION

IN WASTED UTILITY PAYMENTS EVERY YEAR

Leaks are one of the biggest reasons why compressed air remains the most expensive source of energy in a facility. According to the Compressed Air and Gas Institute, the overall efficiency of a typical system can be as low as 10 to 15%.

ELIMINATE THE RISK OF LEAKS WITH TRULINK

TruLink's design utilizes two variations of coupling technology, Push-to-Connect and Clamp-to-Connect. Both variations feature the deepest level of engagement from tube to fitting on the market. Combined with a spaced double o-ring seal technology, TruLink can achieve an unparalleled sealing advantage and eliminate the risk of leaks at your facility.

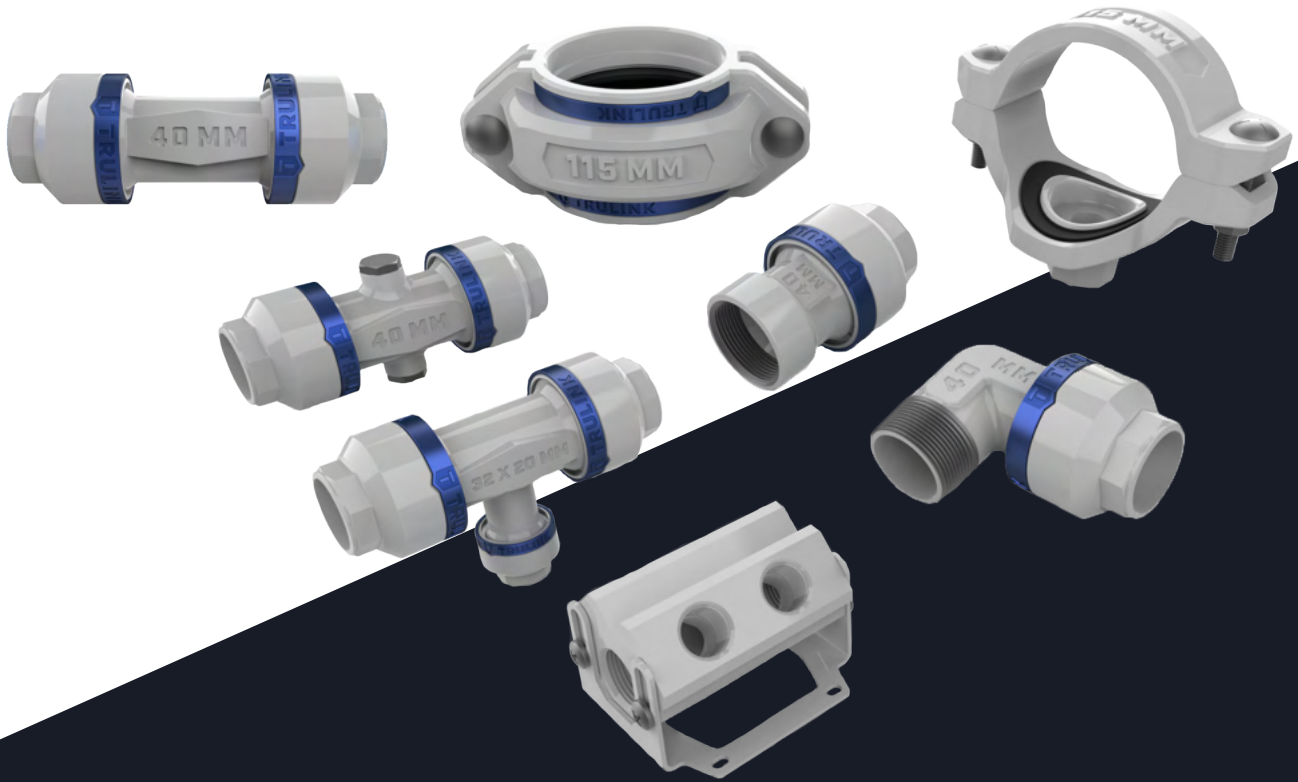


SCAN HERE TO BEGIN REDUCING ENERGY COSTS AT YOUR FACILITY





TRULINK™



INNOVATIVE TECHNOLOGIES DRIVING THE INDUSTRY FORWARD

- ✓ All Metal System
- ✓ Leak-Free Guarantee
- ✓ Lifetime Warranty

TruLink's innovative design - with unmatched strength, performance, and reliability - is backed by 10 industry leading patented technologies. Our Push-to-Connect and Clamp-to-Connect fittings have deep tubing engagements to stabilize the system and prevent any leaks from occurring. This over time will contribute large cost savings for your facility. All TruLink products are engineered for life and are covered by our warranty for the lifetime of your system.

How We Work Alongside You

We take a 360-degree approach to evaluate your system and understand your needs. Then we engineer a system and deliver a turnkey solution that makes installation easy, fast and scalable.

How to Choose the Right Size Compressed Air Piping

You can start by determining your maximum system CFM requirements to select the right size pipe for your system by flow rate.

Flow rates are based on a 1psi pressure drop per 100ft run of pipe and couplings in a straight line. For loop systems, flow rates can be doubled.

Tube Diameter	CFM@ 125psi	CFM@ 150psi	CFM@ 175psi	CFM@ 300psi
20mm = 3/4"	36	39	42	58
25mm = 1"	76	81	88	119
32mm = 1 1/4"	146	158	171	190
40mm = 1 1/2"	266	291	310	358
50mm = 2"	476	526	565	637
63mm = 2 1/2"	881	965	1047	1163
73mm = 2 3/4"	1064	1169	1290	1427
90mm = 3"	2162	2364	2644	2947
115mm = 4"	4205	4591	4810	5578
168mm = 6"	11194	12153	13250	14750
220mm = 8"	23169	25279	27854	30428
273mm = 10"	35921	39325	47201	55051

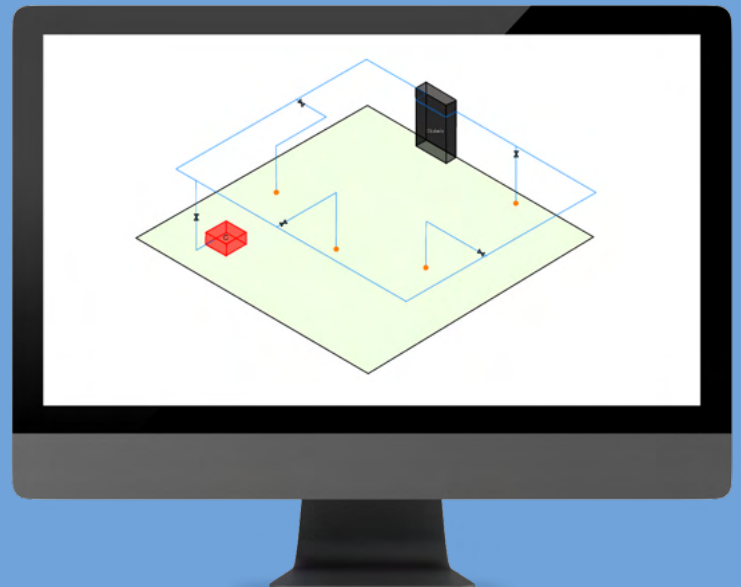
Begin Designing Your System ONLINE Now!

Build your system online now using our configurator. This tool allows our design engineers to respond quickly and accurately to your needs.



SCAN HERE
to get started!

OR contact us directly for one-on-one assistance



AST APPLIED SYSTEM
TECHNOLOGIES™

Applied System Technologies™

Website: appliedsystemtech.com

Phone: 704-947-6966

Email: info@appliedsystemtech.com

